

# ON SITE MANAGEMENT!

# MDC

## FOR LEASE

## 117<sup>th</sup> & Blackbob

15028 W 117<sup>th</sup> St.  
OLATHE, KS 66062



**Connect with neighboring space for 8,050 SF total!**

### PROPERTY SPECIFICATIONS

**Square Footage:** ±4,600

**Base Rent:** Call for details.

**CAM Charges:** Call for details.

**Includes:** Estimated Taxes, Insurance, Lawn, Water, Trash, Exterior Lights, Snow Removal and Fire Monitoring. See Lease for more details.

**Space Amenities:** Large Open Office, Conference Room, Private Office, Break Room and over 2,000 SF of Warehouse with a Dock High AND Drive-in Door.

**Lease Term:** Negotiable

**Space Available:** Immediately

### Contact Information

**Tyler Dean**

**Property Manager**

**913-327-7677**

**tylerdean@mdcks.com**

**MDC, INC.** | [WWW.MDCPROPERTY.COM](http://WWW.MDCPROPERTY.COM)

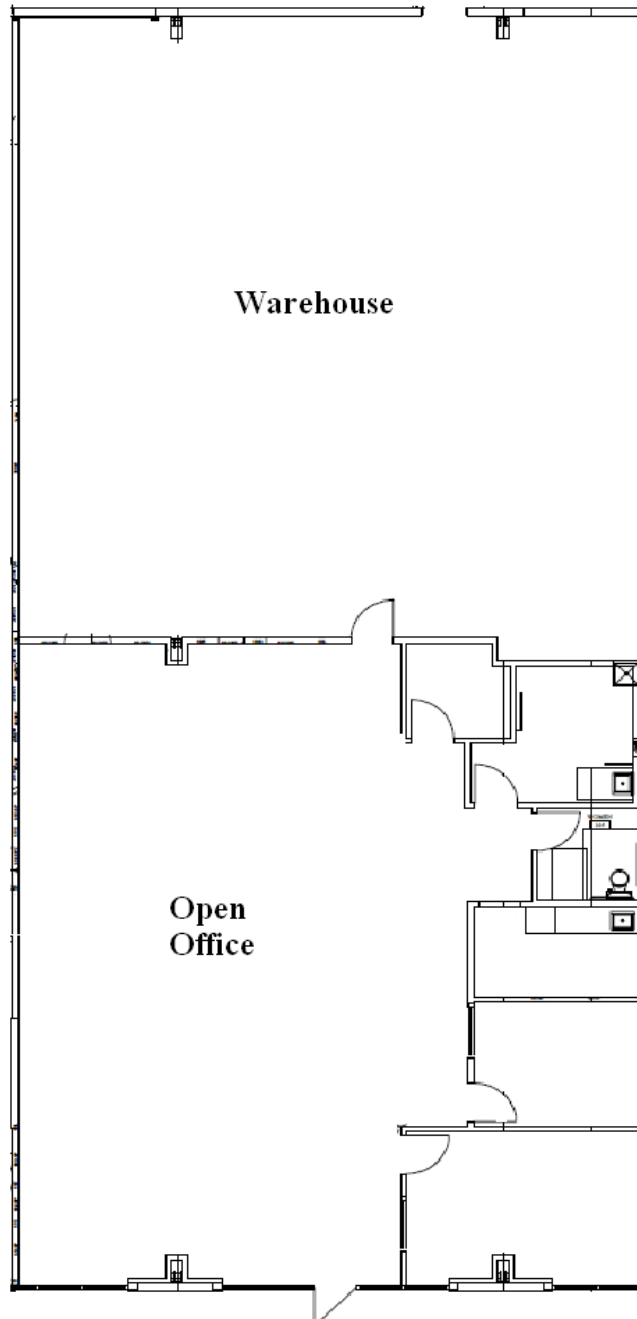
Information furnished regarding property is from source deemed reliable but no warranty or representation is made as to the accuracy thereof and it is submitted subject to errors, omissions, prior sale or Lease or withdrawal without notice.

**ON SITE MANAGEMENT!**

**MDC**

**FOR LEASE**

**Space Layout**



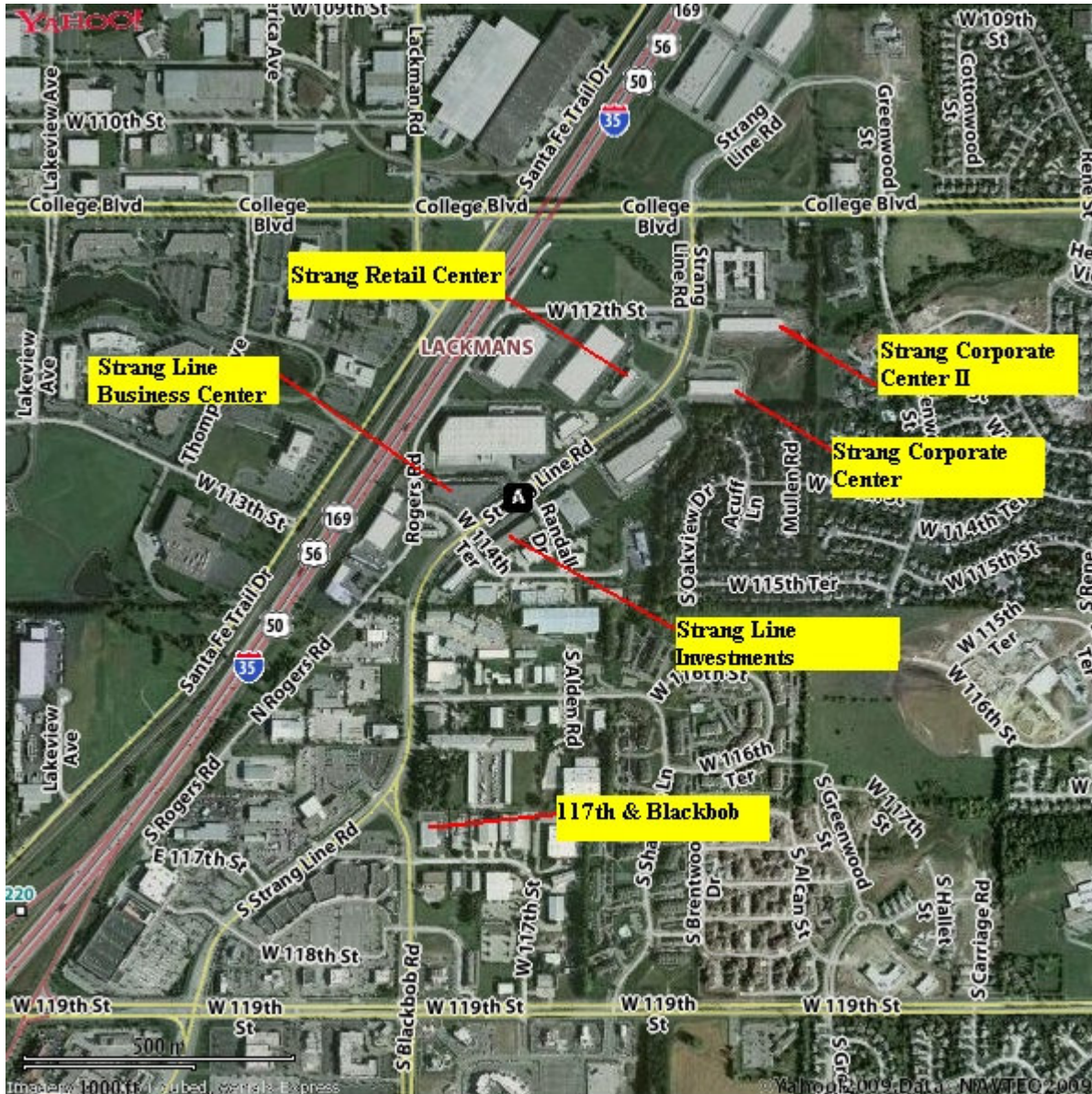
**MDC, INC.** | [WWW.MDCPROPERTY.COM](http://WWW.MDCPROPERTY.COM)

Information furnished regarding property is from source deemed reliable but no warranty or representation is made as to the accuracy thereof and it is submitted subject to errors, omissions, prior sale or Lease or withdrawal without notice.

# ON SITE MANAGEMENT!

# MDC

## FOR LEASE



Prime end space located near busy retail intersection of 119<sup>th</sup> and Blackbob Road. Minutes from I-35 or College Blvd.

**MDC, INC.** | [WWW.MDCPROPERTY.COM](http://WWW.MDCPROPERTY.COM)

Information furnished regarding property is from source deemed reliable but no warranty or representation is made as to the accuracy thereof and it is submitted subject to errors, omissions, prior sale or Lease or withdrawal without notice.