

# ON SITE MANAGEMENT!

# MDC

## FOR LEASE

### 117<sup>th</sup> & Blackbob

15024 W 117<sup>th</sup> St.  
OLATHE, KS 66062



#### PROPERTY SPECIFICATIONS

**Square Footage:** ±3,450

**Base Rent:** Call for details.

**CAM Charges:** Call for details.

**Includes:** Estimated Taxes, Insurance, Lawn, Water, Trash, Exterior Lights, Snow Removal and Fire Monitoring. See Lease for more details.

**Space Amenities:** Large Open Office, Break Room, Restroom, Drive-in Door.

Remove some of the office to allow for more warehouse space. Install a few walls to provide for a few more private offices and a conference room. Let's work together to make it fit.

**Lease Term:** Negotiable

**Space Available:** Immediately

#### Contact Information

**Tyler Dean**

**Property Manager**

**913-327-7677**

**tylerdean@mdcks.com**

**MDC, INC.** | [WWW.MDCPROPERTY.COM](http://WWW.MDCPROPERTY.COM)

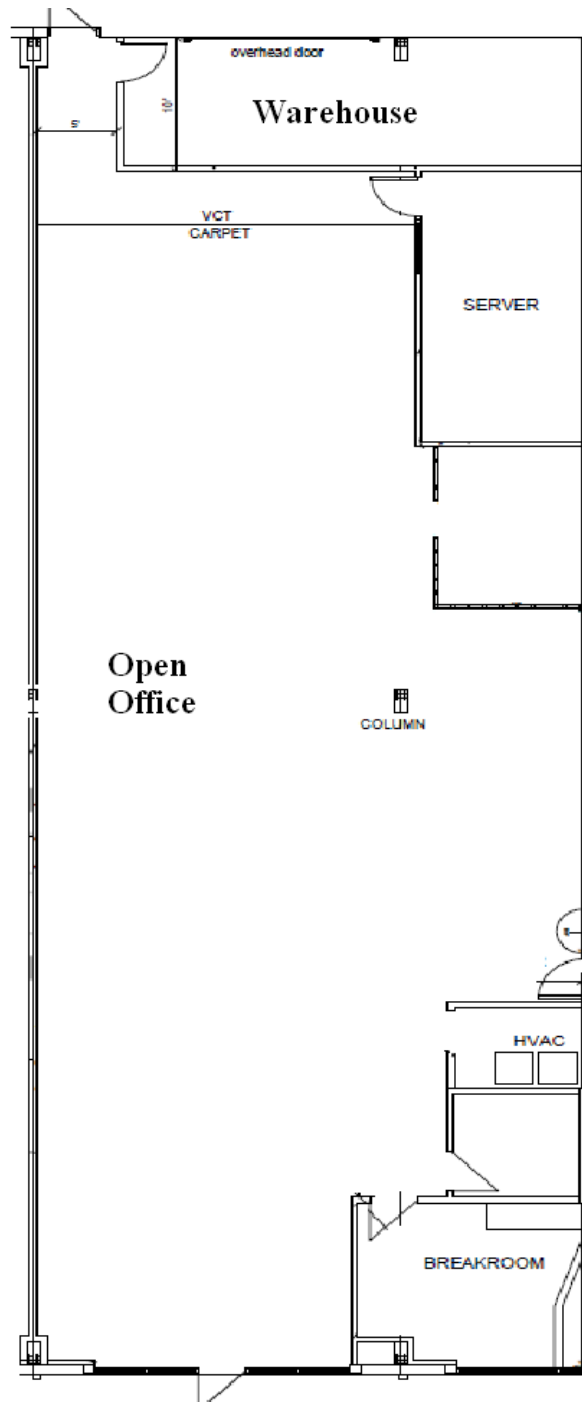
Information furnished regarding property is from source deemed reliable but no warranty or representation is made as to the accuracy thereof and it is submitted subject to errors, omissions, prior sale or Lease or withdrawal without notice.

# ON SITE MANAGEMENT!

# MDC

## FOR LEASE

### Space Layout



**MDC, INC.** | [WWW.MDCPROPERTY.COM](http://WWW.MDCPROPERTY.COM)

Information furnished regarding property is from source deemed reliable but no warranty or representation is made as to the accuracy thereof and it is submitted subject to errors, omissions, prior sale or Lease or withdrawal without notice.

# ON SITE MANAGEMENT!

# MDC

## FOR LEASE



Prime end space located near busy retail intersection of 119<sup>th</sup> and Blackbob Road. Minutes from I-35 or College Blvd.

**MDC, INC.** | [WWW.MDCPROPERTY.COM](http://WWW.MDCPROPERTY.COM)

Information furnished regarding property is from source deemed reliable but no warranty or representation is made as to the accuracy thereof and it is submitted subject to errors, omissions, prior sale or Lease or withdrawal without notice.