

**ON SITE MANAGEMENT!**

**MDC**

**FOR LEASE**

**STRANG LINE INVESTMENTS  
11419 STRANG LINE ROAD  
LENEXA, KS 66215**



**PROPERTY SPECIFICATIONS**

**Square Footage:** ±4,052 SF (Office - 2,026 SF Warehouse – 2,026 SF)

**Base Rent:** Call for details.

**CAM Charges:** Call for details.

**Includes:** Estimated Taxes, Insurance, Lawn, Water, Trash, Exterior Lights, Snow Removal and Fire Monitoring. See Lease for more details.

**Space Amenities:** 5 Private Offices, 2 Restrooms, Break Room, Open Office Area, 2 Conference Rooms and Reception Area. 2 Drive-In Doors. Large Carpeted, AIR CONDITIONED and Heated Warehouse Space.

**Lease Term:** Negotiable

**Space Available:** Immediately

**Security Deposit:** Equal to one month's base rent.

**Contact Information**

**Tyler Dean**

**Property Manager**

**913-327-7677      tylerdean@mdcks.com**

**MDC, INC. | [WWW.MDCPROPERTY.COM](http://WWW.MDCPROPERTY.COM)**

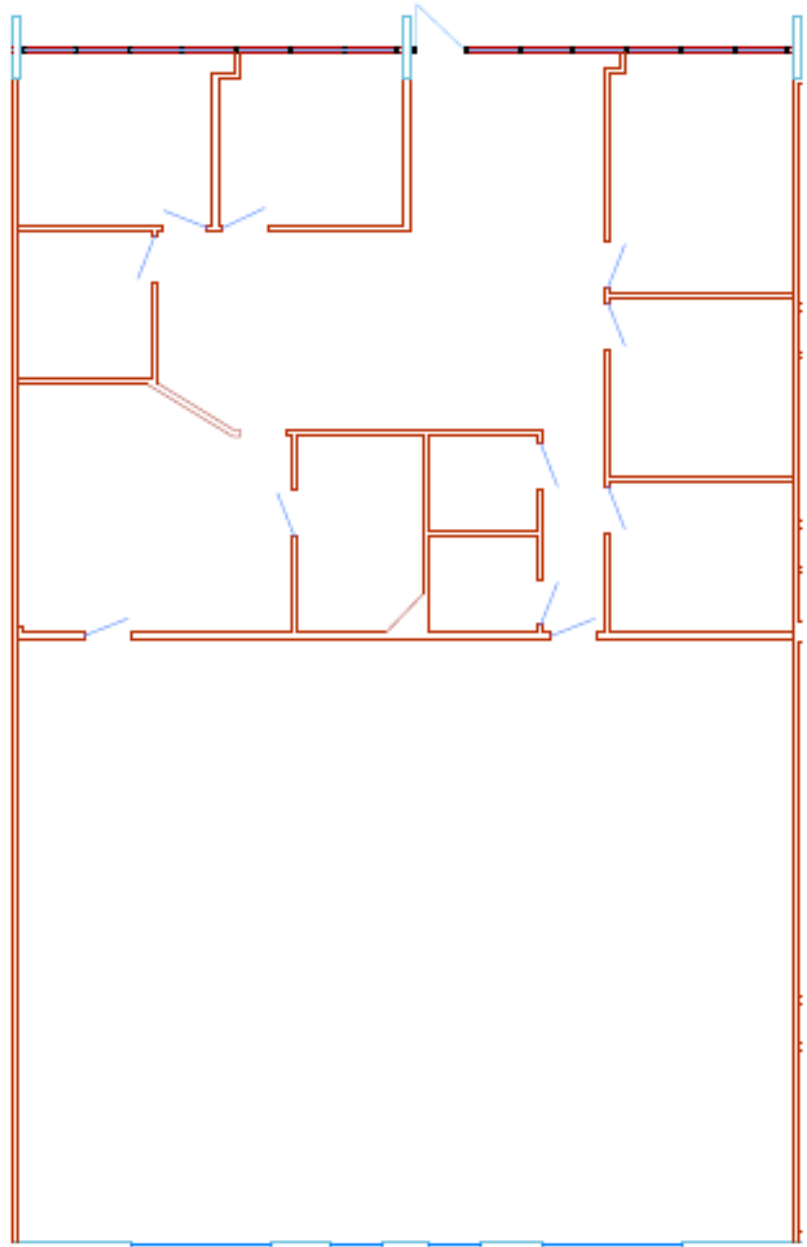
Information furnished regarding property is from source deemed reliable but no warranty or representation is made as to the accuracy thereof and it is submitted subject to errors, omissions, prior sale or Lease or withdrawal without notice.

# ON SITE MANAGEMENT!

# MDC

## FOR LEASE

Front----->



**MDC, INC.**

[WWW.MDCPROPERTY.COM](http://WWW.MDCPROPERTY.COM)

Information furnished regarding property is from source deemed reliable but no warranty or representation is made as to the accuracy thereof and it is submitted subject to errors, omissions, prior sale or Lease or withdrawal without notice.

# ON SITE MANAGEMENT!

# MDC

## FOR LEASE



We have multiple properties available in Southern Johnson County. If this space does not support your needs, we probably have one that will. Ask about our other spaces available or opening up in the near future. We will be glad to work with you to find the best fit for you or your client's business.

**ON SITE MANAGEMENT TO ENSURE YOU ARE ALWAYS TAKEN CARE OF!**

**MDC, INC.** | [WWW.MDCPROPERTY.COM](http://WWW.MDCPROPERTY.COM)

Information furnished regarding property is from source deemed reliable but no warranty or representation is made as to the accuracy thereof and it is submitted subject to errors, omissions, prior sale or Lease or withdrawal without notice.